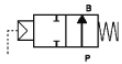


2/2 WAY PISTON VALVE, G 1/2" ÷ 2" NORMALLY OPEN; BRONZE



normally open
flow under seat

TYPE: REGULAR NO

TECHNICAL SPECIFICATIONS

Media: water, oil, air, aggressive media and steam⁽¹⁾
 Media temperature: -10°C ... +180°C
 Ambient temperature: -10°C ... +60°C
 Pilot media: air, inert gases, water
 Body material: bronze (CB491K EN 1982 : 2000)
 Bonnet material: brass (CW617N EN 12165 : 1999)
 Actuator body material: Polyamide PA6 (reinforced fiberglass 30%)
 Seal material: PTFE type TFM 1600
 Position indicator as standard

BENEFITS

Waterhammer-free design
 Actuator housing rotation 360°

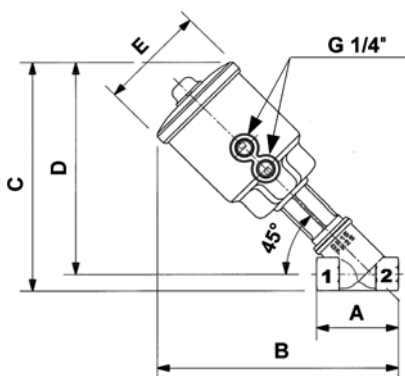
OPTIONS

Manual override (ex. code RCG205STWM0) see page 24
 Stroke regulator (ex. code RCG210STJR0) see page 24
 Travel switch (ex. code RCG208LTZI0) see page 24
 Design for vacuum applications up to 10⁻² mbar (ex. code RCG205STW0V)
 NPT connection (ex. code RCN205STW00)



| SELECTION TABLE | VALVES | connection | DN orifice | Flow rate Kvs | Working pressure ⁽¹⁾ | | Flow direction | Pilot pressure ⁽²⁾ | | Actuator ø |
|-----------------|-------------|-------------|------------|---------------|---------------------------------|-----------|----------------|-------------------------------|-----------|------------|
| | | | | | min (bar) | max (bar) | | min (bar) | max (bar) | |
| | Code | (ISO 228 G) | (mm) | (l/min) | min (bar) | max (bar) | (2 1) | min (bar) | max (bar) | (mm) |
| | RCG205STW00 | 1/2" | 15 | 87 | 0 | 16 | under seat | 2.5 | 10 | 63 |
| | RCG206STX00 | 3/4" | 20 | 164 | 0 | 16 | under seat | 4.3 | 10 | 63 |
| | RCG207STY00 | 1" | 25 | 260 | 0 | 16 | under seat | 5.5 | 10 | 63 |
| | RCG208STZ00 | 1 1/4" | 32 | 410 | 0 | 16 | under seat | 6.5 | 10 | 63 |
| | RCG209STK00 | 1 1/2" | 40 | 700 | 0 | 16 | under seat | 9 | 10 | 63 |
| | RCG210STJ00 | 2" | 50 | 950 | 0 | 12 | under seat | 9.4 | 10 | 63 |
| | RCG207LTY00 | 1" | 25 | 260 | 0 | 16 | under seat | 2 | 8 | 90 |
| | RCG208LTZ00 | 1 1/4" | 32 | 410 | 0 | 16 | under seat | 4 | 8 | 90 |
| | RCG209LTK00 | 1 1/2" | 40 | 700 | 0 | 16 | under seat | 5 | 8 | 90 |
| | RCG210LTJ00 | 2" | 50 | 950 | 0 | 16 | under seat | 7 | 8 | 90 |

(1) Steam: Max. working pressure 10 bar (9 barg); - (2) Minimum pilot pressure at max. working pressure; for lower working pressure see selection charts;



| DIMENSIONS & WEIGHTS | Connection | Actuator ø | A | B | C | D | E | weight |
|----------------------|-------------|------------|------|------|------|------|------|--------|
| | (ISO 228 G) | (mm) | (mm) | (mm) | (mm) | (mm) | (mm) | (kg) |
| | 1/2" | 63 | 65 | 192 | 184 | 171 | 85 | 1.2 |
| | 3/4" | 63 | 75 | 198 | 192 | 176 | 85 | 1.3 |
| | 1" | 63 | 90 | 212 | 205 | 185 | 85 | 1.5 |
| | 1 1/4" | 63 | 110 | 225 | 217 | 193 | 85 | 1.9 |
| | 1 1/2" | 63 | 120 | 230 | 225 | 198 | 85 | 2.1 |
| | 2" | 63 | 150 | 248 | 241 | 207 | 85 | 2.9 |
| | 1" | 90 | 90 | 223 | 216 | 196 | 112 | 2.0 |
| | 1 1/4" | 90 | 110 | 234 | 227 | 202 | 112 | 2.4 |
| | 1 1/2" | 90 | 120 | 239 | 235 | 207 | 112 | 2.6 |
| | 2" | 90 | 150 | 257 | 250 | 216 | 112 | 3.3 |