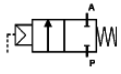


## 2/2 WAY PISTON VALVE G 1/2" ÷ 2"; AISI 316L HIGH TEMPERATURE VERSION



**normally closed  
flow over seat**

**TYPE: NC**

### TECHNICAL SPECIFICATIONS

- Media: water, oil, air, aggressive media and steam<sup>(1)</sup>
- Media temperature: -10°C ... +200°C
- Ambient temperature: -10°C ... +60°C
- Pilot media: air, inert gases
- Body material: cast AISI 316L (see page 36)
- Bonnet material: cast AISI 316L (see page 36)
- Actuator body material: Polyamide PA66 (reinforced fiberglass 30%)
- Seal material: PTFE type TFM 1600
- Position indicator as standard
- Valves DN32÷DN50 complying with 97/23/EC Directive Category I

### BENEFITS

- Actuator housing rotation 360°

### OPTIONS

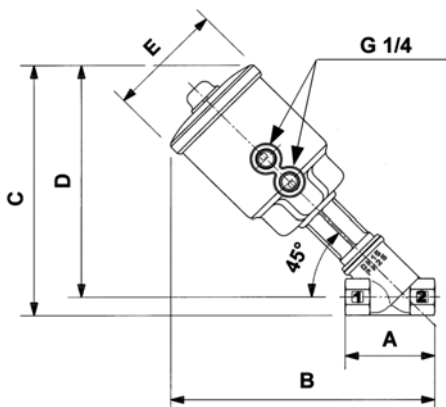
- Manual override (Ex. code PG205STW~~M~~H) see page 24
- Stroke regulator (Ex. code PG210LTJR~~H~~) see page 24
- Travel switch (Ex. code PG208LTZ~~I~~H) see page 24
- NPT connection (Ex. code PN205STW0H)
- Optional connections see pages: weld p. 17, flange p.18, clamp p.19-21



| SELECTION TABLE | VALVES     | connection  | DN orifice | Flow rate Kvs | Working pressure <sup>(1)</sup> |                   | Flow direction | Pilot pressure <sup>(2)</sup> |           | Actuator ø |
|-----------------|------------|-------------|------------|---------------|---------------------------------|-------------------|----------------|-------------------------------|-----------|------------|
|                 | Code       | (ISO 228 G) | (mm)       | (l/min)       | min (bar)                       | max (bar)         | (1̄ 2)         | min (bar)                     | max (bar) | (mm)       |
|                 | PG205STW0H | 1/2"        | 15         | 87            | 0                               | 20 <sup>(1)</sup> | over seat      | 3.7                           | 10        | 63         |
| PG206STX0H      | 3/4"       | 20          | 164        | 0             | 20 <sup>(1)</sup>               | over seat         | 4.4            | 10                            | 63        |            |
| PG207STY0H      | 1"         | 25          | 260        | 0             | 20 <sup>(1)</sup>               | over seat         | 2              | 8                             | 63        |            |
| PG208STZ0H      | 1 1/4"     | 32          | 410        | 0             | 16 <sup>(1)</sup>               | over seat         | 3.5            | 8                             | 90        |            |
| PG209STK0H      | 1 1/2"     | 40          | 700        | 0             | 16 <sup>(1)</sup>               | over seat         | 4              | 8                             | 90        |            |
| PG210STJ0H      | 2"         | 50          | 950        | 0             | 15 <sup>(1)</sup>               | over seat         | 6.5            | 8                             | 90        |            |

(1) Steam: Max. working pressure 14.5 barg

(2) Minimum pilot pressure at max. working pressure; for lower working pressure see selection charts;



### DIMENSIONS & WEIGHTS

| Connection  | Actuator ø | A    | B    | C    | D    | E    | weight |
|-------------|------------|------|------|------|------|------|--------|
| (ISO 228 G) | (mm)       | (mm) | (mm) | (mm) | (mm) | (mm) | (kg)   |
| 1/2"        | 63         | 65   | 192  | 184  | 171  | 85   | 1.2    |
| 3/4"        | 63         | 75   | 198  | 192  | 176  | 85   | 1.3    |
| 1"          | 63         | 90   | 212  | 205  | 185  | 85   | 1.5    |
| 1 1/4"      | 90         | 110  | 234  | 227  | 202  | 112  | 2.4    |
| 1 1/2"      | 90         | 120  | 239  | 235  | 207  | 112  | 2.6    |
| 2"          | 90         | 150  | 257  | 250  | 216  | 112  | 3.3    |