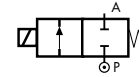


2/2 WAY DIRECT ACTING SOLENOID VALVE, G 1/8"

COMMON FEATURES

- Body material: stainless steel (1.4305 EN 10088/AISI 303)
- Orifice material: stainless steel (1.4305 EN 10088/AISI 303)
- Operator material: stainless steel
- Protection class: IP 65 (with connector and gasket)

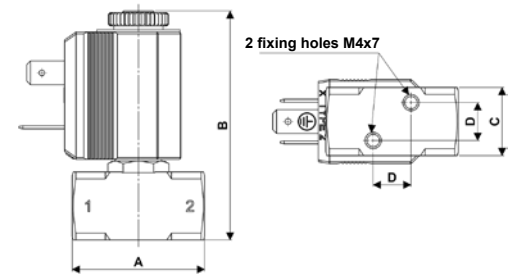
TYPE: B298



Normally Closed



| DIMENSIONS & WEIGHTS | | B298 |
|----------------------|-----------|------|
| G connection | [ISO 228] | 1/8" |
| A | [mm] | 35 |
| B | [mm] | 60.6 |
| C | [mm] | 18 |
| D | [mm] | 10 |
| weight | [kg] | 0.1 |



Flow direction overseat 1 → 2

| VALVE | nominal Ø | flow rate Kvs | OPD | | | COILS | |
|----------------|-----------|---------------|--------|---------|---------|-------|-----------------------|
| | | | min. | max. AC | max. DC | code | [Volts/Hz] |
| code | [mm] | [l/min] | [barg] | [barg] | [barg] | code | [Volts/Hz] |
| B298DVC | 1.5 | 1.3 | 0 | 22 | 18 | 2250 | 24v DC |
| B298DVE | 2.0 | 1.9 | 0 | 18 | 8 | 2200 | 24v 50/60Hz |
| B298DVG | 2.5 | 2.7 | 0 | 13 | 2.5 | 2400 | 110v 50Hz - 120v 60Hz |
| B298DVH | 3.0 | 3.5 | 0 | 8 | 1 | 2600 | 200v 50Hz - 220v 60Hz |
| | | | | | | 2700 | 230v 50Hz - 240v 60Hz |

B298 - FKM seal, NC -

- Media: water, oil, air and aggressive fluids
- Media temperature: -10°C ÷ +130°C
- Ambient temperature: -10°C ÷ +50°C
- Seal material: foodgrade FKM
- Coil power: AC 10v_A (holding)
AC 16v_A (inrush)
DC 7w

| VALVE | nominal Ø | flow rate Kvs | OPD | | | COILS | |
|----------------|-----------|---------------|--------|---------|---------|-------|-----------------------|
| | | | min. | max. AC | max. DC | code | [Volts/Hz] |
| code | [mm] | [l/min] | [barg] | [barg] | [barg] | code | [Volts/Hz] |
| B298DKC | 1.5 | 1.3 | 0 | 24 | 24 | 2250 | 24v DC |
| B298DKE | 2.0 | 1.9 | 0 | 18 | 15 | 2200 | 24v 50/60Hz |
| B298DKG | 2.5 | 2.7 | 0 | 15 | 3 | 2400 | 110v 50Hz - 120v 60Hz |
| | | | | | | 2600 | 200v 50Hz - 220v 60Hz |
| | | | | | | 2700 | 230v 50Hz - 240v 60Hz |

B298 - KALREZ® seal, NC -

- Media: chemicals
- Media temperature: -10°C ÷ +130°C
- Ambient temperature: -10°C ÷ +50°C
- Seal material: Kalrez® Spectrum™ 6375
- Coil power: AC 10v_A (holding)
AC 16v_A (inrush)
DC 7w

