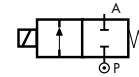


## 2/2 WAY DIRECT ACTING SOLENOID VALVE, FLANGE 32x32

### COMMON FEATURES

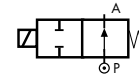
Body material: brass (CW617N EN 12165)  
 Orifice material: stainless steel (1.4305 EN 10088/AISI 303)  
 Operator material: stainless steel  
 Protection class: IP 65 (with connector and gasket)

### TYPE: D201



Normally Closed

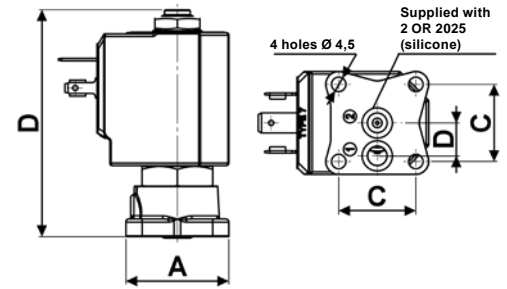
### TYPE: RD201



Normally Open



| DIMENSIONS & WEIGHTS |            | D201  | RD201 |
|----------------------|------------|-------|-------|
| <b>G connection</b>  | [ISO 228G] | /     | /     |
| <b>A</b>             | [mm]       | 32    | 32    |
| <b>B</b>             | [mm]       | 70.6  | 68.4  |
| <b>C</b>             | [mm]       | 24    | 24    |
| <b>D</b>             | [mm]       | 10.25 | 10.25 |
| <b>weight</b>        | [kg]       | 0.25  | 0.3   |



Flow direction overseat 1 → 2

| VALVE          | nominal Ø | flow rate Kvs | OPD    |         |         | COILS |                       |
|----------------|-----------|---------------|--------|---------|---------|-------|-----------------------|
|                |           |               | min.   | max. AC | max. DC | code  | [Volts/Hz]            |
| code           | [mm]      | [l/min]       | [barg] | [barg]  | [barg]  | code  | [Volts/Hz]            |
| <b>D201DVC</b> | 1.5       | 1.3           | 0      | 24      | 24      | 7250  | 24v DC                |
| <b>D201DVE</b> | 2.0       | 2.2           | 0      | 20      | 20      | 7200  | 24v 50/60Hz           |
| <b>D201DVG</b> | 2.5       | 3.4           | 0      | 18      | 18      | 7400  | 110v 50Hz - 120v 60Hz |
| <b>D201DVH</b> | 3.0       | 4.5           | 0      | 15      | 10      | 7600  | 200v 50Hz - 220v 60Hz |
|                |           |               |        |         |         | 7700  | 230v 50Hz - 240v 60Hz |

### D201 - FKM seal, NC -

Media: water, oil, air  
 Media temperature: -10°C ÷ +130°C  
 Ambient temperature: -10°C ÷ +50°C  
 Seal material: foodgrade FKM  
 Coil power: AC 18vA (holding)  
 AC 36vA (inrush)  
 DC 14w

### OPTIONS

EPDM seal, temperature max. 120°C (e.g. code D201DEC)  
 Manual override (e.g. code D201DVGM)

| VALVE           | nominal Ø | flow rate Kvs | OPD    |         |         | COILS class 'H' only |                       |
|-----------------|-----------|---------------|--------|---------|---------|----------------------|-----------------------|
|                 |           |               | min.   | max. AC | max. DC | code                 | [Volts/Hz]            |
| code            | [mm]      | [l/min]       | [barg] | [barg]  | [barg]  | code                 | [Volts/Hz]            |
| <b>RD201DVC</b> | 1.5       | 1.3           | 0      | 24      | 24      | 7251                 | 24v DC                |
| <b>RD201DVG</b> | 2.5       | 3.4           | 0      | 16      | 16      | 7201                 | 24v 50/60Hz           |
| <b>RD201DVH</b> | 3.0       | 4.5           | 0      | 10      | 10      | 7401                 | 110v 50Hz - 120v 60Hz |
|                 |           |               |        |         |         | 7601                 | 200v 50Hz - 220v 60Hz |
|                 |           |               |        |         |         | 7701                 | 230v 50Hz - 240v 60Hz |

### RD201 - FKM seal, NO -

Media: water, oil, air  
 Media temperature: -10°C ÷ +130°C  
 Ambient temperature: -10°C ÷ +50°C  
 Seal material: foodgrade FKM  
 Coil power: AC 18vA (holding)  
 AC 36vA (inrush)  
 DC 14w

### OPTIONS

EPDM seal, temperature max. 120°C (e.g. code RD201DEG)

| VALVE           | nominal Ø | flow rate Kvs | OPD    |         |         | COILS class 'H' only |                       |
|-----------------|-----------|---------------|--------|---------|---------|----------------------|-----------------------|
|                 |           |               | min.   | max. AC | max. DC | code                 | [Volts/Hz]            |
| code            | [mm]      | [l/min]       | [barg] | [barg]  | [barg]  | code                 | [Volts/Hz]            |
| <b>RD201DRC</b> | 1.5       | 1.3           | 0      | 55      | 55      | 7251                 | 24v DC                |
| <b>RD201DRE</b> | 2.0       | 2.2           | 0      | 25      | 25      | 7201                 | 24v 50/60Hz           |
| <b>RD201DRH</b> | 3.0       | 4.5           | 0      | 10      | 10      | 7401                 | 110v 50Hz - 120v 60Hz |
|                 |           |               |        |         |         | 7601                 | 200v 50Hz - 220v 60Hz |
|                 |           |               |        |         |         | 7701                 | 230v 50Hz - 240v 60Hz |

### RD201 - RUBY seal, NO -

Media: water, oil, liquids  
 Media temperature: -10°C ÷ +130°C  
 Ambient temperature: -10°C ÷ +50°C  
 Seal material: Ruby  
 Coil power: AC 18vA (holding)  
 AC 36vA (inrush)  
 DC 14w

### NOTES

Not 100% leak-proof when used with air/gases. Approximate leak rate is 1,5 ml/min at max. OPD