

2/2 WAY DIRECT ACTING SOLENOID VALVE, G 1/8" - G 1/4"

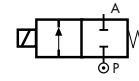
COMMON FEATURES

Body material: brass (CW617N EN 12165)
 Orifice material: stainless steel (1.4305 EN 10088/AISI 303)
 Operator material: stainless steel
 Protection class: IP 65 (with connector and gasket)

OPTIONS

Available with body thread connection 1/8" (e.g. code D262DVH), performance ratings remain the same as D263DVH.
 Manual override (e.g. code D262DVCM).

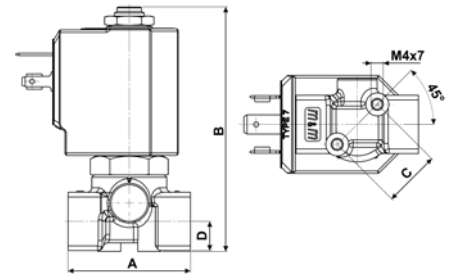
TYPE: D262/263



Normally Closed



| DIMENSIONS & WEIGHTS | | D262 | D263 |
|----------------------|-----------|------|------|
| G connection | [ISO 228] | 1/8" | 1/4" |
| A | [mm] | 40 | 40 |
| B | [mm] | 77.5 | 77.5 |
| C | [mm] | 18.5 | 18.5 |
| D | [mm] | 9.5 | 9.5 |
| weight | [kg] | 0.26 | 0.26 |



Flow direction overseat 1 → 2

| VALVE | nominal Ø | flow rate Kvs | OPD | | | COILS | |
|----------------------|-----------|---------------|--------|---------|---------|-------|-----------------------|
| | | | min. | max. AC | max. DC | code | [Volts/Hz] |
| code | [mm] | [l/min] | [barg] | [barg] | [barg] | code | [Volts/Hz] |
| D263DVA | 1.0 | 0.5 | 0 | 30 | 30 | 7250 | 24v DC |
| D263DVC | 1.5 | 1.3 | 0 | 24 | 24 | 7200 | 24v 50/60Hz |
| D263DVG | 2.5 | 3.4 | 0 | 18 | 16 | 7400 | 110v 50Hz - 120v 60Hz |
| D263DVH | 3.0 | 4.5 | 0 | 15 | 10 | 7600 | 200v 50Hz - 220v 60Hz |
| D263DVL [Ⓢ] | 4.0 | 6.0 | 0 | 10 | 5 | 7700 | 230v 50Hz - 240v 60Hz |
| D263DVN [Ⓢ] | 5.0 | 7.5 | 0 | 5 | 2,5 | | |
| D263DVP [Ⓢ] | 6.0 | 8.0 | 0 | 3 | 1 | | |

[Ⓢ] Manual override not available for orifice > Ø 3 mm

D262/263 - FKM seal, NC -

Media: water, oil, air
 Media temperature: -10°C ÷ +130°C
 Ambient temperature: -10°C ÷ +50°C
 Seal material: foodgrade FKM
 Coil power: AC 18VA (holding)
 AC 36VA (inrush)
 DC 14w

OPTIONS

EPDM seal, temperature max. 120°C (e.g. code D262DEH)
 For vacuum see page 36
 ATEX version see page 37

| VALVE | nominal Ø | flow rate Kvs | OPD | | | COILS | |
|---------|-----------|---------------|--------|---------|---------|-------|-----------------------|
| | | | min. | max. AC | max. DC | code | [Volts/Hz] |
| code | [mm] | [l/min] | [barg] | [barg] | [barg] | code | [Volts/Hz] |
| D263DLA | 1.0 | 0.5 | 0 | 9 | 9 | 7251 | 24v DC |
| D263DLC | 1.5 | 1.3 | 0 | 9 | 9 | 7201 | 24v 50/60Hz |
| D263DLG | 2.5 | 3.4 | 0 | 9 | 9 | 7401 | 110v 50Hz - 120v 60Hz |
| D263DLH | 3.0 | 4.5 | 0 | 9 | 8 | 7601 | 200v 50Hz - 220v 60Hz |
| | | | | | | 7701 | 230v 50Hz - 240v 60Hz |

D262/263 - FILLED PTFE seal, NC -

Media: steam
 Media temperature: -10°C ÷ +180°C
 Ambient temperature: -10°C ÷ +70°C
 Seal material: Sigodur (filled PTFE)
 Coil power: AC 18VA (holding)
 AC 36VA (inrush)
 DC 14w

NOTES

Seamless tube as standard

| VALVE | nominal Ø | flow rate Kvs | OPD | | | COILS | |
|----------|-----------|---------------|--------|---------|---------|-------|-----------------------|
| | | | min. | max. AC | max. DC | code | [Volts/Hz] |
| code | [mm] | [l/min] | [barg] | [barg] | [barg] | code | [Volts/Hz] |
| D263DRB1 | 1.2 | 0.7 | 0 | 200 | 60 | 72Z1 | 24v DC |
| D263DRC1 | 1.5 | 1.3 | 0 | 200 | 35 | 72K1 | 24v 50/60Hz |
| D263DRE1 | 2.0 | 2.2 | 0 | 120 | 25 | 74K1 | 110v 50Hz - 120v 60Hz |
| D263DRH1 | 3.0 | 4.5 | 0 | 50 | 11 | 77K1 | 230v 50Hz - 240v 60Hz |

D262/263 - RUBY seal, NC -

Media[Ⓢ]: water, oil, liquids
 Media temperature: -10°C ÷ +130°C
 Ambient temperature: -10°C ÷ +50°C
 Seal material: Ruby
 Coil power: AC 25VA (holding)
 AC 50VA (inrush)
 DC 22w

NOTES

Seamless tube as standard

[Ⓢ] Not 100% leak-proof when used with air/gases. Approximate leak rate is 1,5 ml/min at max. OPD.

ATTENTION: When high pressure valves are supplied without a coil, their nameplates display the max. OPD of the valve when equipped with an AC (25VA) and DC (22w) coil (as shown in the table above).

When using alternative coil power ratings please ensure to request separately the appropriate nameplate at time of order.